



Homesite Details
Homes in Columbus



LASALLE "T" ELEVATION
Sample Image



HOMESITE DETAILS

Address: 2933 SUSSEX PLACE DR. [\(View Map\)](#)
GROVE CITY, OH 43123

Total Price: \$132,400

Approx Move-In: TBD

Community: [SUSSEX PLACE](#)

Phase: 01

Lot: SS27801

LASALLE "T" ELEVATION MODEL DETAILS

Square Feet from: 2096

Standard Bedrooms: 4

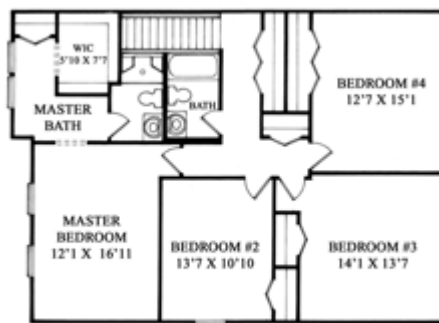
Standard Bathrooms: 2 + 1 half bath(s)

Garage Area: 352 square feet

[CLICK HERE TO CONTACT US ABOUT THIS HOMESITE](#)

FLOOR PLANS:

SECOND FLOOR:



SECOND FLOOR PLAN

FIRST FLOOR:

SALESPERSON INFORMATION

Salesperson: [Marc Creach](#)

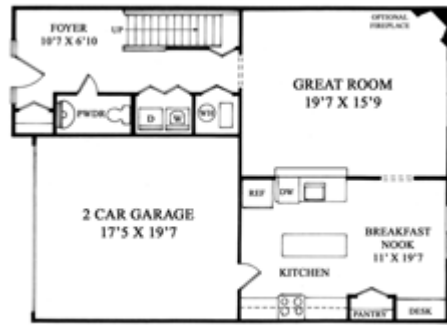
Phone: (614)875-5795

Fax: (614)875-7312

Email: creachm@maronda.com

LASALLE "T" ELEVATION STANDARD FEATURES

- Professionally Designed And Installed Package
- Raised Panel Cabinetry
- Mirrored Medicine Cabinets In All Bathrooms
- Elegant 6 Panel Interior Doors
- Energy Saving Double Pane Windows
- Non-Corrosive Pvc Water Lines
- Decorative Curved Arches
- 25 Year Fiberglass Asphalt Shingle Roof
- Stainless Steel Kitchen Sink With Drain
- Low Maintenance 1-Piece Fiberglass Toilets



FIRST FLOOR PLAN

- 50-Gallon Hot Water Heater
- High Efficiency Furnace
- White Painted Trim And Doors

SELECTED FEATURES FOR THIS HOME:

- Water Line Icemaker
- Fan R/I-All 2nd Fl Brs Or Loft
- Landscape Package Americana
- 10'x10' Concrete Patio

☐ ALTERNATE ELEVATIONS:



This information is for illustrative purposes only, and not part of a legal contract. Floor plans and standard features may vary according to lot and alternate style selected, and are subject to change without notice. All prices, amenities, specifications and community information are subject to change.

Copyright © 2003 Maronda Homes. All Rights Reserved.

The information, text, graphics and links provided herein are provided by Maronda Homes as a convenience to its customers. Maronda Homes does not warrant the accuracy or completeness of the information, text, graphics, links and other items contained on this server or a

All prices are subject to change at any time. Please consult Maronda Homes sales personnel for specific price information for