



MARSHALL

Masterpiece Collection

welcome home. Approximately 3722 sq ft



ENGLISH MANOR
(WITH RECESSED ENTRY AND OPTIONAL WING WALL)



ARTS & CRAFTS
(WITH OPTIONAL STONE)



GEORGIAN



FRENCH COUNTRY

To view available options for this design visit fischerhomes.com

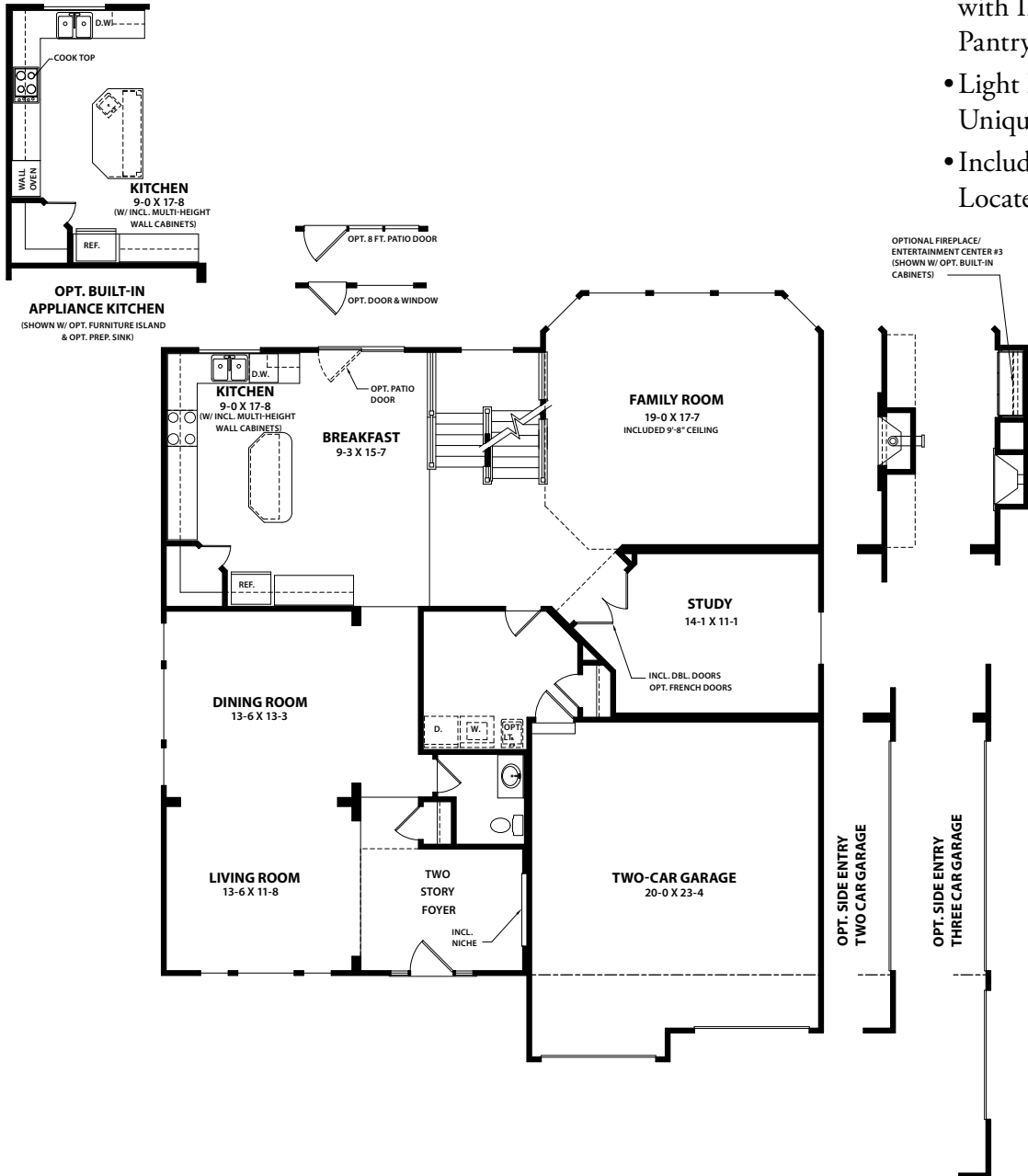
2670 CHANCELLOR DRIVE SUITE 300 • CRESTVIEW HILLS, KY 41017 • phone 859.341.4709 • fax 859.344.5900

welcome home.

Approximately 3722 sq ft

FIRST FLOOR FEATURES

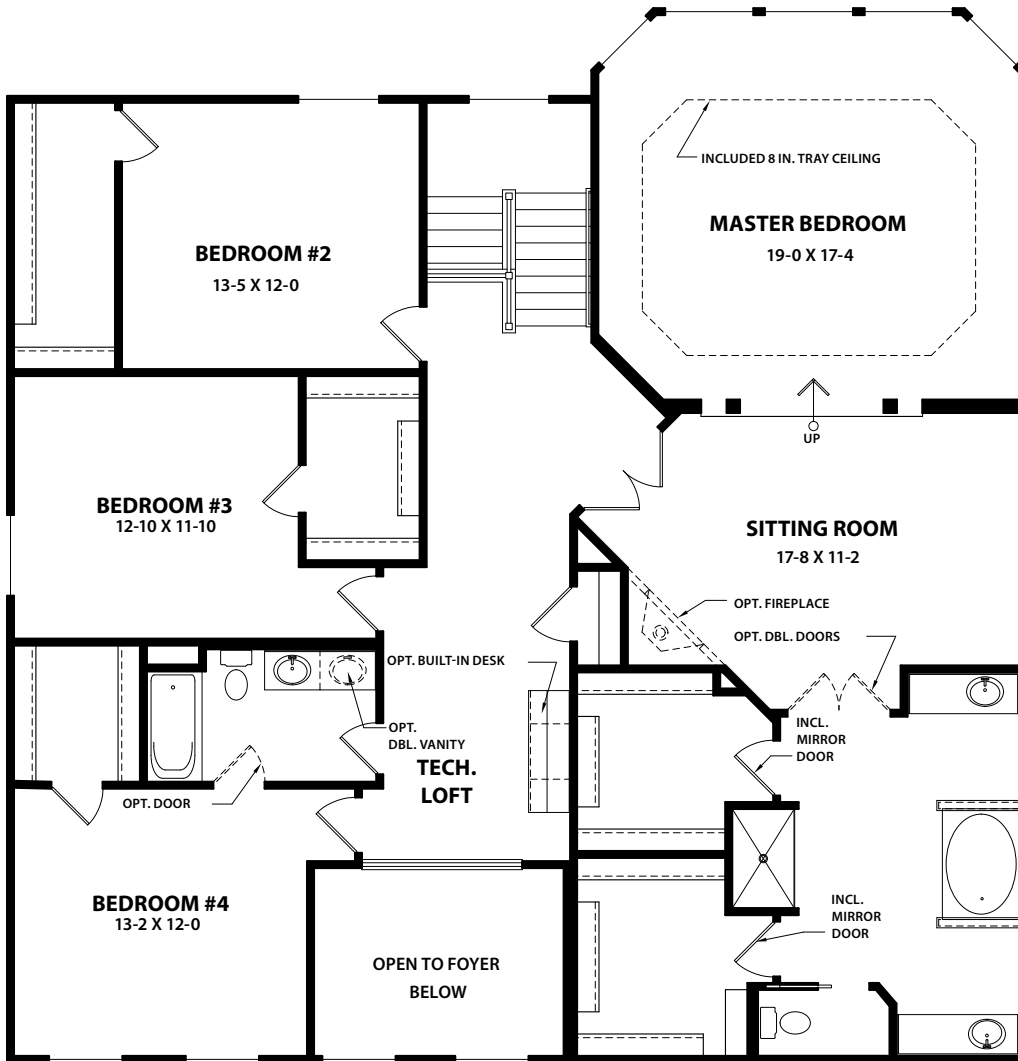
- Soaring Two-Story Foyer
- Open Living/Dining Room
- Spacious Kitchen/Breakfast Space with Included Island and Corner Pantry
- Light Filled Family Room with Unique Angled Window Wall
- Included Study Conveniently Located at Rear of Home



FIRST FLOOR DESIGN
 (INCLUDES 9 FT FIRST FLOOR CEILING HEIGHT)

To view available options for this design visit fischerhomes.com

Copyright © 1997/2005 Fischer Homes, Inc. "Because we are constantly improving our product, we reserve the right to change features, brand names, dimensions, architectural details and designs. This brochure is for illustrative purposes only and not part of a legal contract. Windows, doors, and ceilings may vary on options and elevations selected. Not all features nor options are shown. Please ask our sales counselor for complete information."



SECOND FLOOR FEATURES

- Deluxe Master Suite with Spacious Sitting Room and Expansive Master Bedroom
- Included Tray Ceiling in Master Bedroom
- Master Bath Features Dual Walk-In Closets and Separate Shower and Garden Tub
- Four Bedrooms with Tech Loft
- All Bedrooms have Large Walk-In Closets
- Optional Third Bath Arrangement

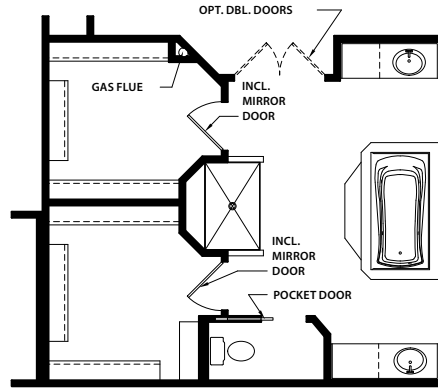
SECOND FLOOR DESIGN

To view available options for this design visit fischerhomes.com

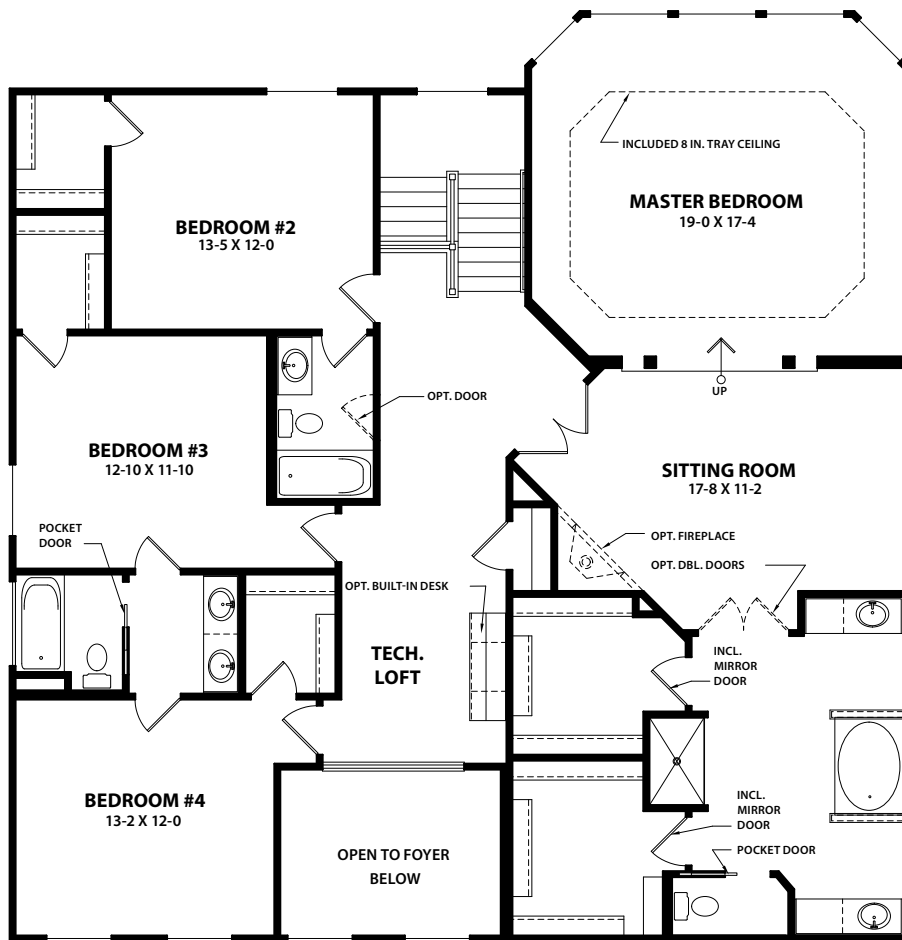
Copyright © 1997/2005 Fischer Homes, Inc. "Because we are constantly improving our product, we reserve the right to change features, brand names, dimensions, architectural details and designs. This brochure is for illustrative purposes only and not part of a legal contract. Windows, doors, and ceilings may vary on options and elevations selected. Not all features nor options are shown. Please ask our sales counselor for complete information."

welcome home.

Approximately 3722 sq ft



DESIGNER BATH OPTION



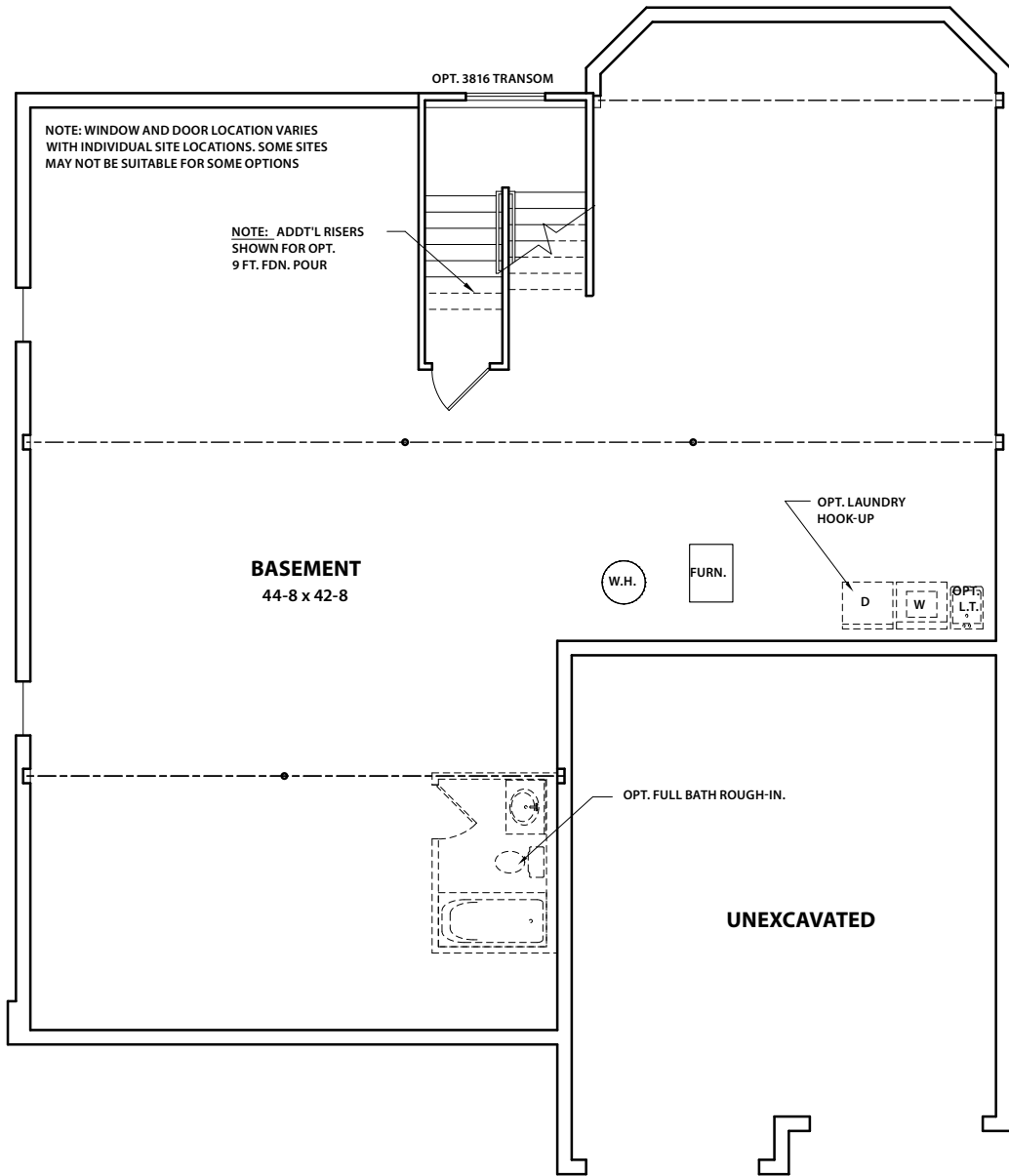
ALTERNATE SECOND FLOOR DESIGN

To view available options for this design visit fischerhomes.com

Copyright © 1997/2005 Fischer Homes, Inc. "Because we are constantly improving our product, we reserve the right to change features, brand names, dimensions, architectural details and designs. This brochure is for illustrative purposes only and not part of a legal contract. Windows, doors, and ceilings may vary on options and elevations selected. Not all features nor options are shown. Please ask our sales counselor for complete information."

welcome home.

Approximately 3722 sq ft



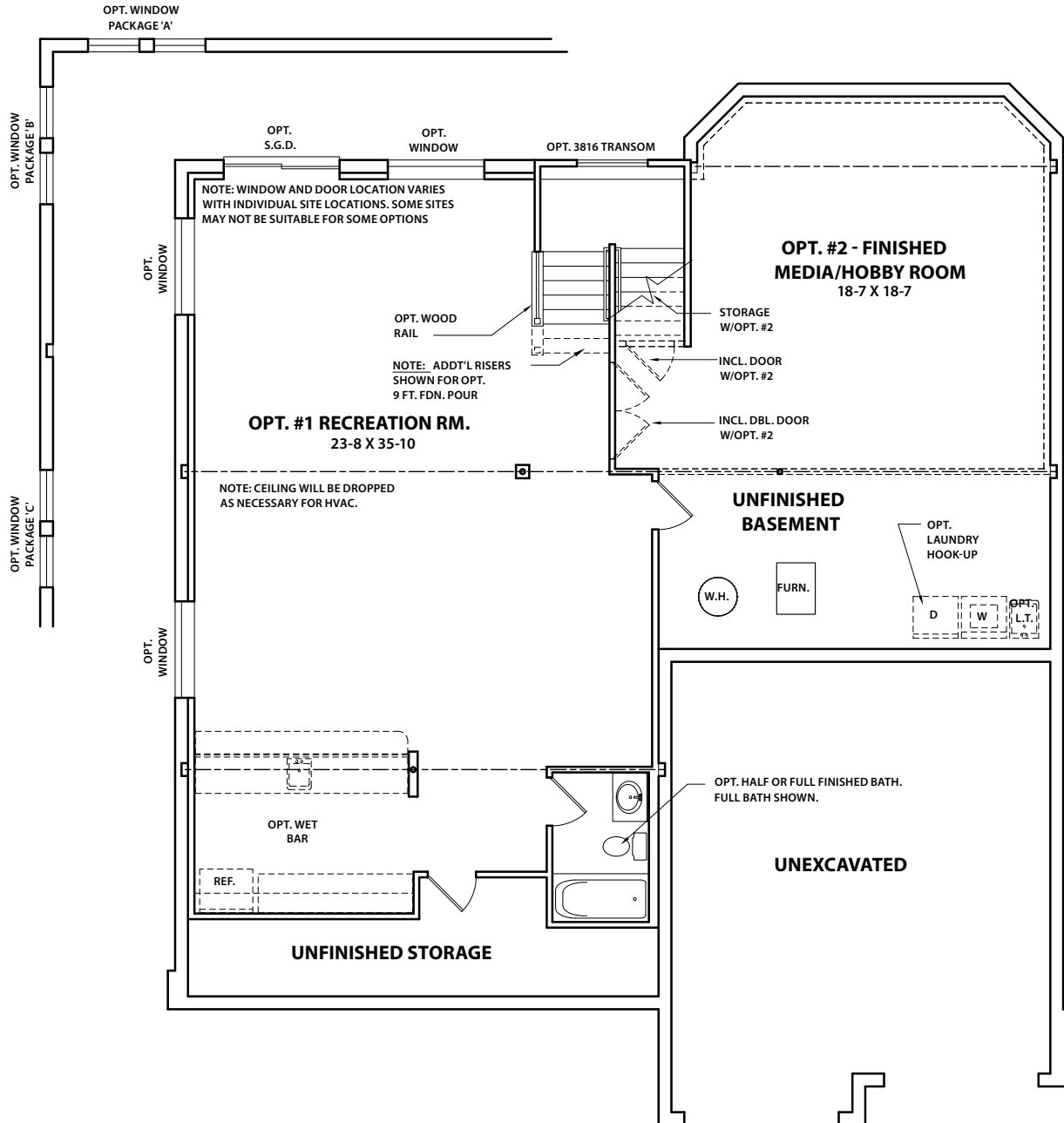
BASEMENT DESIGN

To view available options for this design visit fischerhomes.com

Copyright © 1997/2005 Fischer Homes, Inc. "Because we are constantly improving our product, we reserve the right to change features, brand names, dimensions, architectural details and designs. This brochure is for illustrative purposes only and not part of a legal contract. Windows, doors, and ceilings may vary on options and elevations selected. Not all features nor options are shown. Please ask our sales counselor for complete information."

welcome home.

Approximately 3722 sq ft



OPTIONAL FINISHED LOWER LEVEL DESIGN

To view available options for this design visit fischerhomes.com

Copyright © 1997/2005 Fischer Homes, Inc. "Because we are constantly improving our product, we reserve the right to change features, brand names, dimensions, architectural details and designs. This brochure is for illustrative purposes only and not part of a legal contract. Windows, doors, and ceilings may vary on options and elevations selected. Not all features nor options are shown. Please ask our sales counselor for complete information."