



**Homesite Details**  
Homes in Columbus



**EISENHOWER 'E' ELEVATION**



**HOMESITE DETAILS**

Address: **457 MELIMARE DR.** ([View Map](#))  
 Total Price: **\$373,530**  
 Approx Move-In: **IMMEDIATELY AVAILABLE**  
 Community: [WALNUT CREEK](#)  
 Phase: **01**  
 Lot: **WU25501**

**EISENHOWER 'E' ELEVATION MODEL DI**

Square Feet from: **3495**  
 Standard Bedrooms: **4**  
 Standard Bathrooms: **3**

**CLICK HERE TO  
CONTACT US ABOUT THIS HOME**

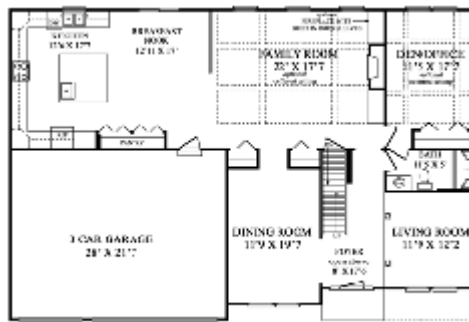
**FLOOR PLANS:**

**SECOND FLOOR:**



SECOND FLOOR PLAN

**FIRST FLOOR:**



FIRST FLOOR PLAN

**SALESPERSON INFORMATION**

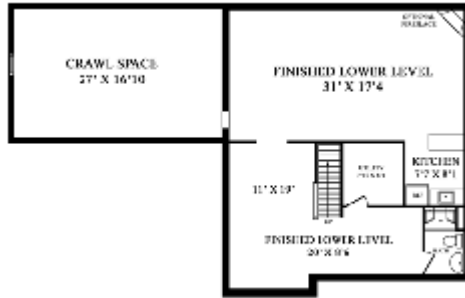
Salesperson: [Steve Nixon](#)  
 Phone: (614)989-4280  
 Email: [snixon@maronda.com](mailto:snixon@maronda.com)

**EISENHOWER 'E' ELEVATION STANDAR**

- Professionally Designed And Installed Package
- 3-Car Garage
- 36" Wall Cabinets W/ 42" Corner Cabinets
- 2-Zone Heating/Cooling System
- Enameled Semi-Gloss Interior Doors
- Hardwood Floors - Foyer And Kitchen
- Upgraded Trim Package
- Expanded 2nd Floor Laundry Room
- 9 Foot 1st Floor Ceilings

**SELECTED FEATURES FOR THIS HOME:**

**OPTIONAL FINISHED LOWER LEVEL:**



FINISHED LOWER LEVEL.

**ALTERNATE ELEVATIONS:**



- Coffered Ceiling Den
- Coffered Ceiling Family Room
- 4 Bedroom W/Loft
- 10' X 24' Deck
- Water Line Icemaker
- Electric Lamppost
- Paddle Fan Rough-In--Family Rm
- Stone/Stucco Front Only
- Refrigerator 22cf
- Microwave
- Level II Carpeting
- Upgrade Padding To 1/2" Rebond
- Hardwood Floor Den
- Landscape Package Sterling





This information is for illustrative purposes only, and not part of a legal contract. Floor plans and standard features may vary according to lot and alternate style selected, and are subject to change without notice. All prices, amenities, specifications and community information are subject to change.

Copyright © 2003 Maronda Homes. All Rights Reserved.

The information, text, graphics and links provided herein are provided by Maronda Homes as a convenience to its customers. Maronda Homes does not warrant the accuracy or completeness of the information, text, graphics, links and other items contained on this server or a

All prices are subject to change at any time. Please consult Maronda Homes sales personnel for specific price information for